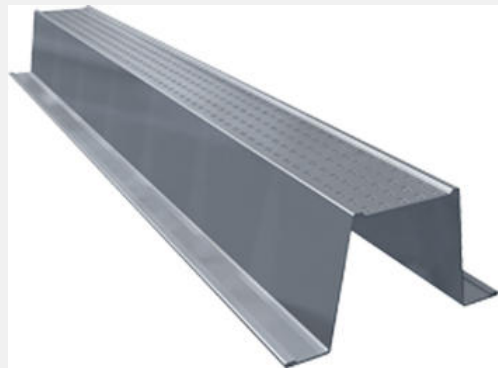


C PURLIN (C75 & C100)

Material GI / ALUZINC / ZINCALUME
Thickness 0.70mm - 3.00mm
Grade SGCH / G550

CEILING BATTEN

Material GI / ALUZINC
Thickness 0.42mm - 0.50mm
Grade SGCH / G550



C CHANNEL (C75 & C100)

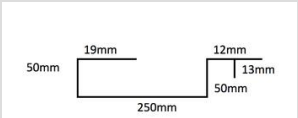
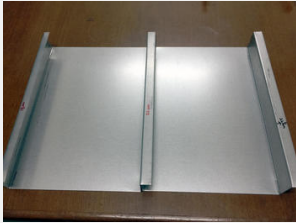
Material GI / ALUZINC / ZINCALUME
Thickness 0.75mm - 1.20mm
Grade SGCH / G550

Description

* C 100 x 40 x 40

FLOOR DECK

Material.....GI, ALUZINC
Thickness.....0.70mm - 1.00mm
Grade.....SGCH / G550



Dura coat Pre-painted aluminium

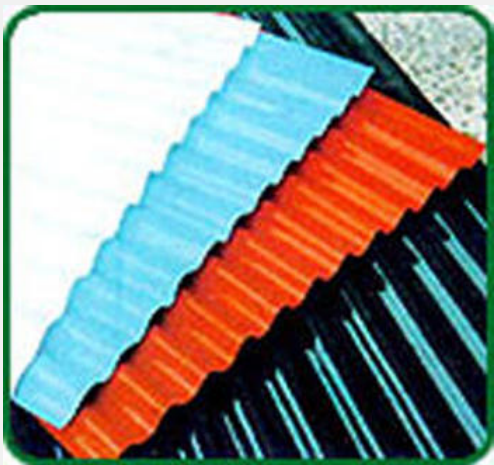
Description

High molecular polymer as monomer and addition of alkyd, is an UV-resistant coating. It can be classified matt and glossy according to coating gloss. The compact molecule structure, makes paint surface luster and smooth, which assure good printing on the panel surface. With an warranty of 8-10 years for weather resistance, it is specially applied for internal decoration and sign board.

Roofing

Description

Aluminium with its outstanding characteristics of light-weight durability, high strength, high heat reflectivity and low thermal emissivity, makes it most suitable material for roofing sheets. It has been used widely for factories, poultry farms, mills, power stations, warehouses and chemical plants





Cold rolled

Description

- Uniform surface finish
- Tight thickness tolerances
- High degree of formability
- Outstanding shape control (flatness)

Electro galvanised

Description

Electro-Galvanized steel coils and sheet are coated with zinc by the electrolytic galvanizing process. This allows for both side coating, one side coating and differential coating. They are given chromate or phosphate treatment to improve corrosion resistance or paintability.



Aluminium zinc

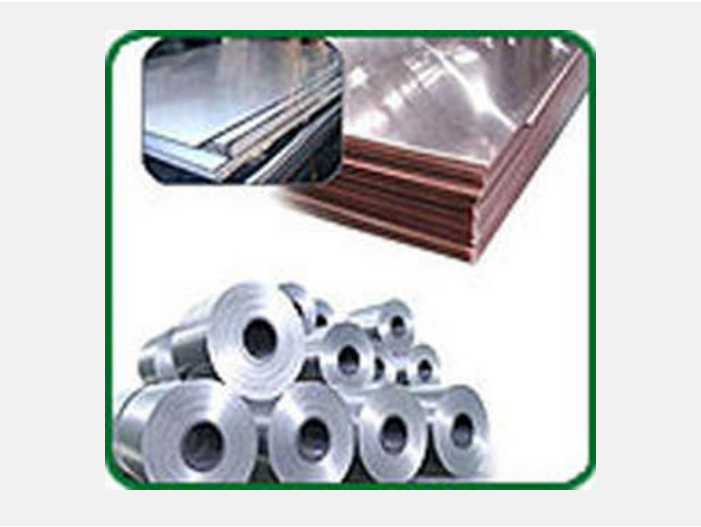
Description

- Base steel grade of galvalume steel coil: SPCC according to the ASTM, JIS, OR EN STANDARD
- Both sheet and coil are available
- Both soft and hard are available
- Available Width of galvalume steel coil: 914/ 1000/ 1219/ 1200/ 1250mm/ 1220mm special width can be available, for examples 200 mm, 300 mm, 400 mm, 500mm, 600mm

Aluminium

Description

- Coil Sheet Flat Sheet Dura Clad
- Roofing
- Aluminium Foil
- Aluminium Extrusion
- Circular Sheet
- Tread Plate



Galvanized iron

Description

Galvanized sheet or coil is defined as a carbon steel sheet coated with zinc on both sides. Continuous hot dipping, or electro-galvanizing are the two processes used to produce galvanized sheet and coil.



Ferrous Metals Sdn. Bhd.

Lot 8047, 8048 & 8049, Jalan Bukit Cheraka, Kampung Baru Subang, 40000, Shah Alam, Selangor, Malaysia

Tel.....03-7846 3868
 Fax.....03-7846 3869
 E-Mail.....Info@ferrous.com.my
 Website.....www.ferrous.com.my

Facebook.....
<https://www.facebook.com/Ferrous-Metals-Sdn-Bhd-03-7846-3868-188754241290577/>

